



FUELING A
GREENER LIFE

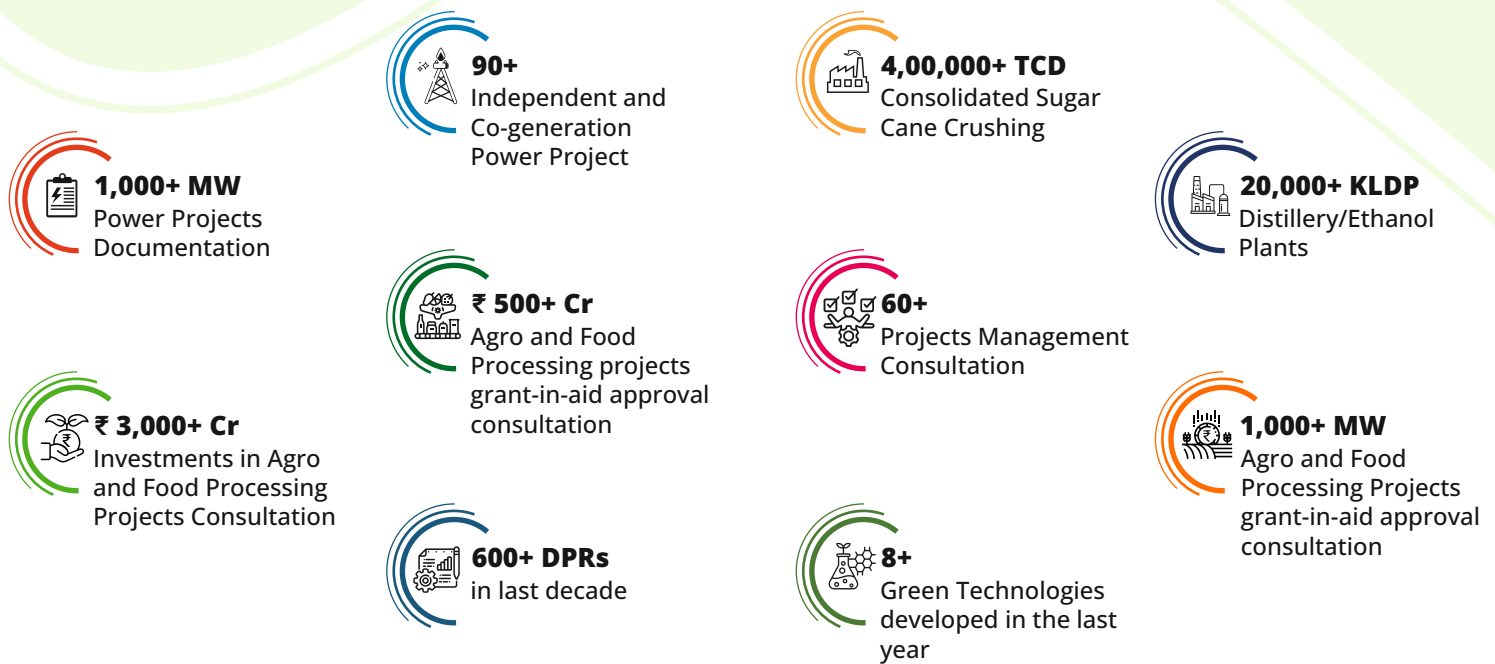


**BIOFUEL &
GREEN CHEMISTRY**

Business DIVISIONS



Progress TILL DATE



We are EMPANELLED WITH

- AU Small Finance Bank
- Indian Bank Association
- Bank of Maharashtra
- Central Bank of India
- Commissionerate of Sugar (Govt. of Maharashtra)
- National Bank for Financing Infrastructure & Development
- Bank of Baroda
- Bank of India
- Canara Bank
- Central Bank of India
- State Bank of India
- Janta Saraswat Bank
- Union Bank of India

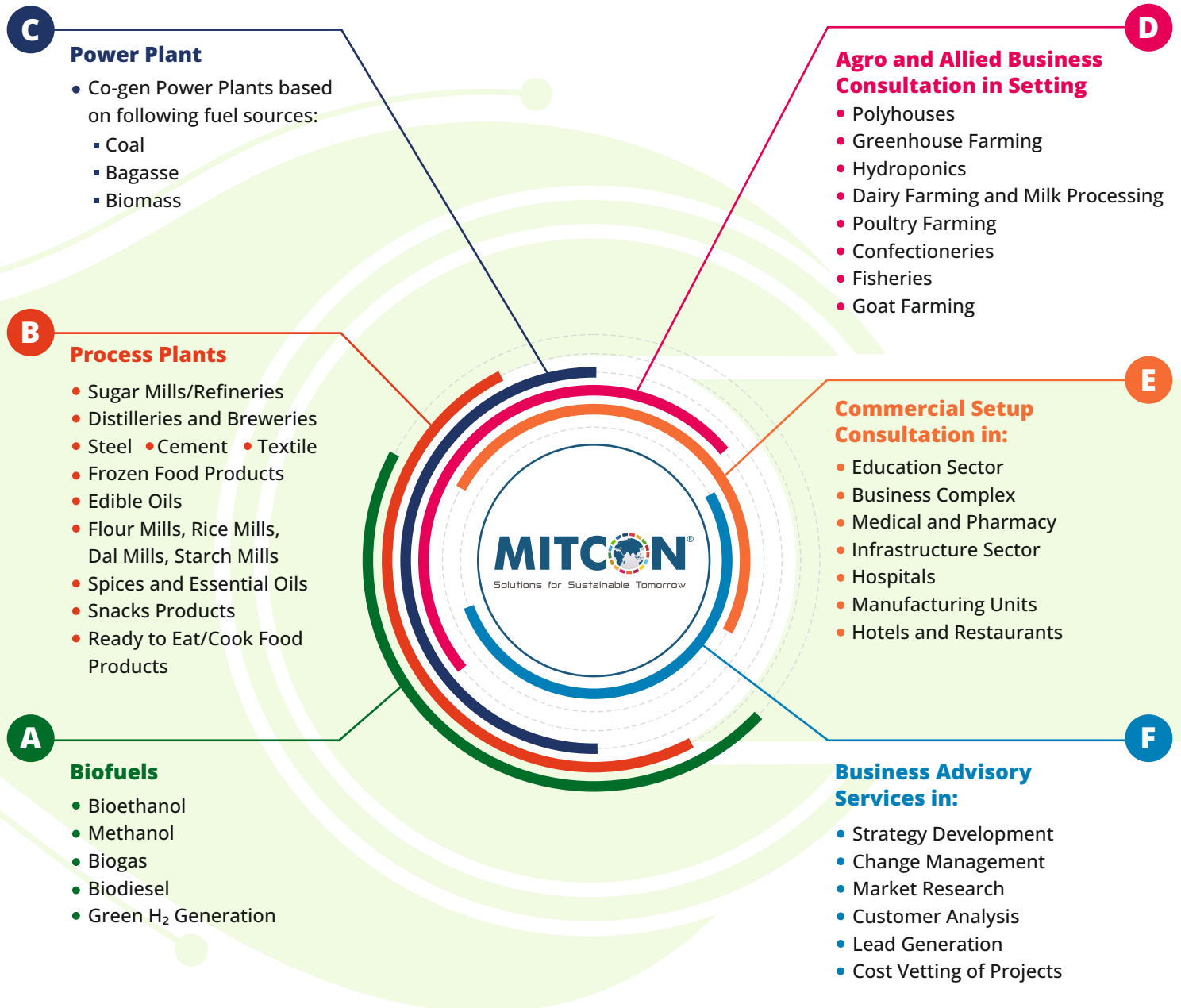
... and more such organizations.

Our NOTABLE CUSTOMER BASE

- Government Entities
- Multinational Industries
- Financial Institutions
- Co-operative Industries
- Public & Private Sector Industries

All major private and cooperative sugar mills/distilleries across India

Our PRESENCE IN



Our EXPERTISE

PROJECT ASSESSMENT

- Market Research/Market Analysis
- Feedstock Survey
- Competitor Analysis
- Customer Identification/Lead Generation
- Import-Export Analysis
- Business Partners/Dealer/Distributor Identification
- Customer Satisfaction Study
- Lab and Pilot Scale Trials (Incubation Center)

DIGITAL SOLUTIONS

- Laser Scanning
- Virtual/3D Modelling
- AR/VR Digital Twins
- e-tendering Hosting Services

PROJECT REPORT

- Project Feasibility Study
- Detailed Project Report
- Techno Economic Viability Study
- Lender Independent Engineer Study

LICENCE & TECHNOLOGIES IN GREEN CHEMISTRY

- Bio-Fuels
- Bio Plastic and Bio-Polymers
- Bio-Chemicals
- Recycle/Circular Economy
- CCUS Solutions
- C2X and P2X Solutions
- Biochar

ENGINEERING SERVICE

- Basic and Detailed Engineering
- Technical Due Diligence
- Process, Efficiency Enhancement
- De-bottle Necking, Productivity and Automation Enhancement
- Customised Solutions for: Agri/Food/Dairy Processing Industries

OTHER SERVICES

- Project Management Consultancy
- EPCM/ EPC Solutions
- Supervision Services



Scan QR
for more
information

MITCON is an ISO 9001:2015 Certified,
Science Based Targets initiative (SBTi) registered Technical Consulting Organization (TCO) and
has incorporated the 17 SDGs (Sustainable Development Goals) in every work aspect.



Get in touch
with us today



CALL US FOR MORE INFO
+91 20 66289100



WRITE US FOR MORE INFO
power@mitconindia.com



VISIT US FOR MORE INFO
www.mitconindia.com

MITCON Consultancy & Engineering Services Limited

1st Floor, Kubera Chambers, Shivajinagar, Pune - 411005 Maharashtra (INDIA)